

CDM 2015
RESIDUAL RISK

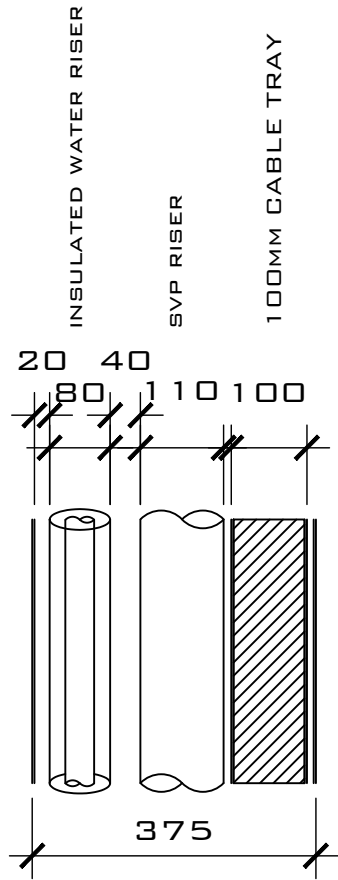
MECHANICAL

MECHANICAL CONTRACTORS SHALL FAMILIARISE THEMSELVES WITH THE INSTALLATION AND EMPLOY SYSTEMS AND METHODS OF WORKING TO REDUCE ANY HAZARDS.

IF IN DOUBT ASK AND NOTIFY

GENERAL

IT IS UNDERSTOOD THAT A COMPETENT CONTRACTOR FAMILIAR WITH THE WORKS REQUIRED WILL BE APPOINTED AND THAT THEY WILL BE AWARE OF THE STANDARD HAZARDS.



CDM 2015
RESIDUAL RISK

ELECTRICAL

ELECTRICAL CONTRACTORS SHALL FAMILIARISE THEMSELVES WITH THE INSTALLATION AND EMPLOY SYSTEMS AND METHODS OF WORKING TO REDUCE ANY HAZARDS.

IF IN DOUBT ASK AND NOTIFY

ELECTRICITY IS DANGEROUS

GENERAL

IT IS UNDERSTOOD THAT A COMPETENT CONTRACTOR FAMILIAR WITH THE WORKS REQUIRED WILL BE APPOINTED AND THAT THEY WILL BE AWARE OF THE STANDARD HAZARDS.

LEGEND



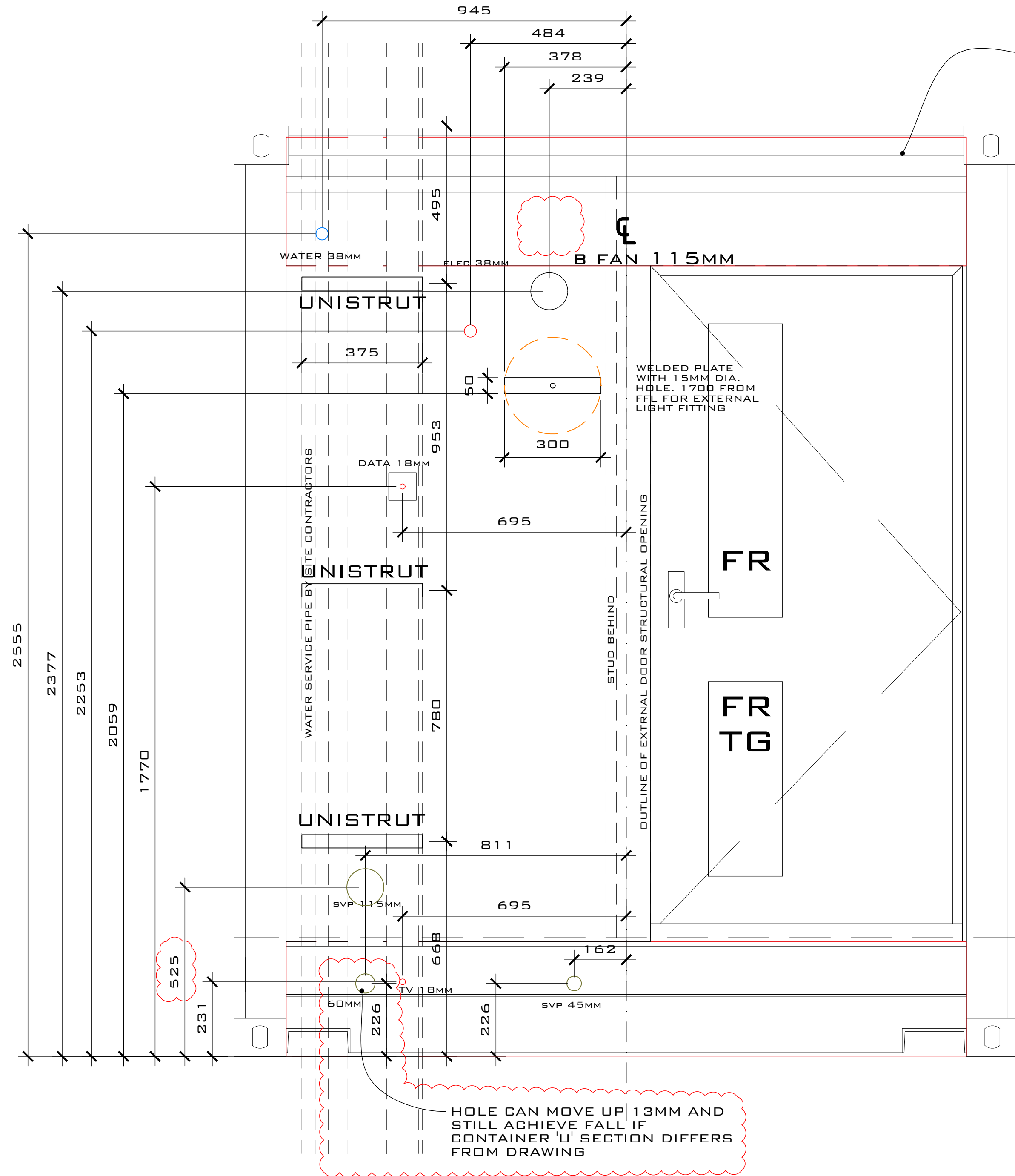
MANROSE COWLED WALL OUTLET 1240BLK

LEGEND

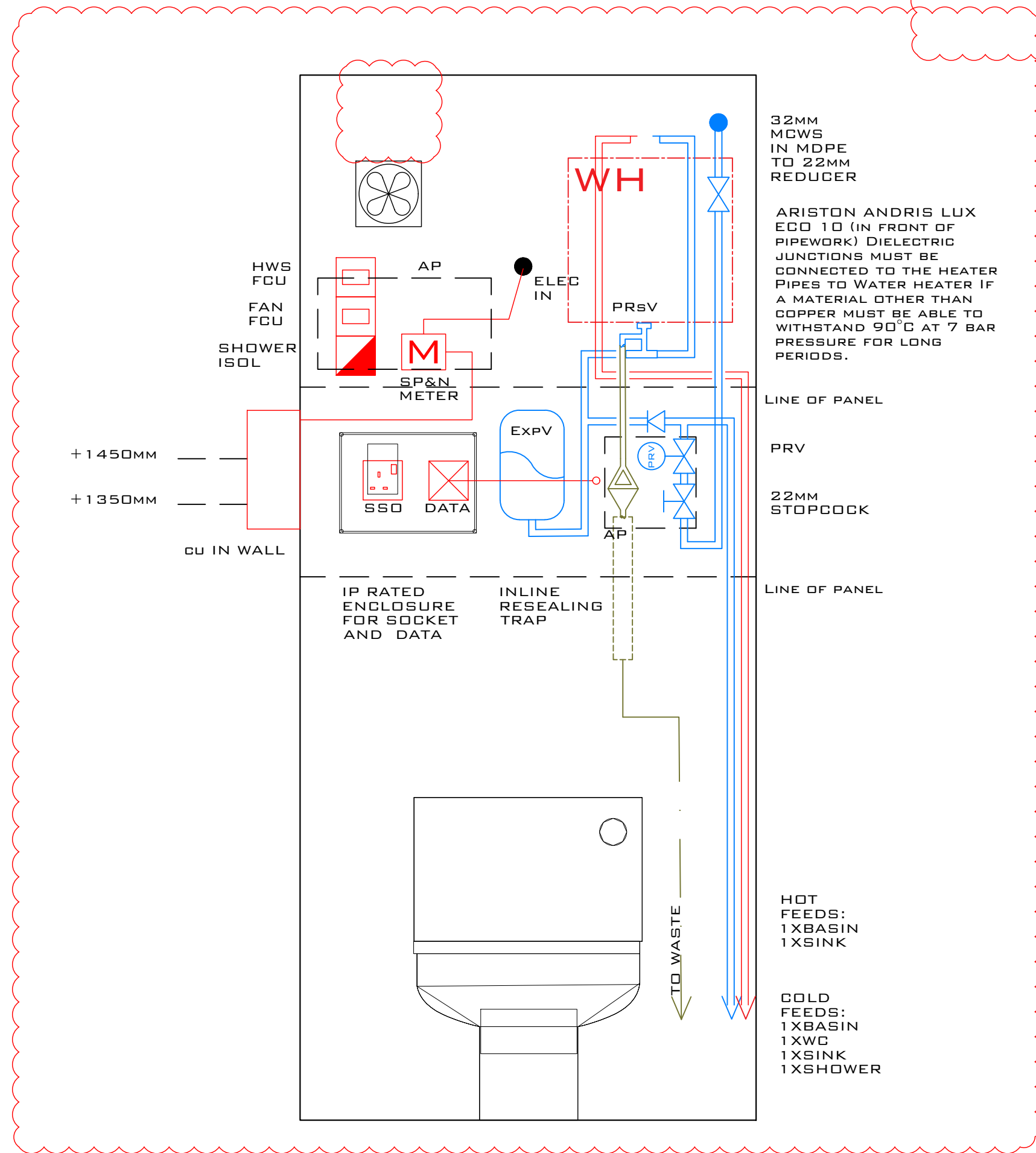
- BLENDING VALVE PRE SET BELOW 48°C
- ISOLATION TEE VALVE
- ISOLATION VALVE
- HOT WATER SERVICE
- COLD WATER SERVICE
- BRASS STOP COCK
- SVP
- TRITON T80Z 7.5KW SHOWER
- ACCESS PANEL SEE TYPICAL DETAIL
- NON-RETURN VALVE
- PRESSURE REDUCING VALVE
- ARISTON 10L ANDRIS LUX 2KW C/W EXPANSION VESSEL AND TUNDISH
- ARISTON 2L EXPANSION VESSEL (KIT A) AND TUNDISH (KIT C)

NOTES:

- ALL DIMENSIONS ARE IN MM, UNLESS STATED OTHERWISE.
- ALL DIMENSIONS TO BE CHECKED ON SITE PRIOR TO CONSTRUCTION OR ORDERING.
- ANY ERRORS OR OMISSIONS TO BE NOTIFIED TO CITYZEN LIMITED IMMEDIATELY.
- CONTRACTOR TO READ & CHECK ALL MANUFACTURES LITERATURE AND IMPLEMENT ITS REQUIREMENTS PRIOR TO INSTALLATION OF ANY MATERIALS AND COMPONENTS.
- CITYZEN LIMITED IS NOT RESPONSIBLE FOR ANY BUILDING WORK THAT IS CARRIED OUT ON SITE.
- ALL MATERIALS AND WORKMANSHIP SHALL CONFORM WITH THE RELEVANT BRITISH AND EUROPEAN STANDARD, SPECIFICATIONS AND CODES OF PRACTICE.
- IF IN ANY DOUBT, ASK.
- ALL EXTERNAL PENETRATIONS, CABLES, PIPES AND DUCTS TO BE PROVIDED WITH FIRE COLLARS & SLEEVES.

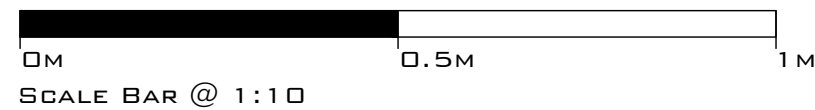


RED OUTLINE INDICATES STEEL PLATE. REFER TO DRAWING 1705-350



TYPICAL INTERNAL SERVICES
IN CUPBOARD / REMOVABLE
PANEL
1:10 SCALE @ A1

TYPE 1 SERVICE, PLATES AND HOLES
1:10 SCALE @ A1

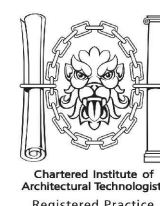


G	04.09.17	SERVICES CUPBOARD UPDATED, SVP HOLE MOVED DOWN FOR FUTURE REF. LEGEND ADDED, KITCHEN HOLE REMOVED	JS	JS	JS
F	07.08.17	ELECTRIC HOLE MOVED TO ALLOW FOR ISOL ABOVE	AG	JS	JS
E	06.07.17	OUTOUTS REVISED IN LINE WITH FABRICATORS COMMENTS	RS	JS	JS
D	23.06.17	PENETRATIONS MOVED, DOOR CHANGED, NOTES AMENDED	JS	JS	JS
C	02.06.17	PENETRATIONS MOVED.	MJ	JS	JS
B	24.04.17	SERVICES MOVED, SERVICES EXTERNAL BOXING ADDED, DOOR ADDED, NOTES UPDATED	MJ	JS	JS
A	27.03.17	FANS MOVED, UNISTRUT CHANGED	MJ	JS	JS
REV	DATE	REVISION	DRAWN	CHECKED	APPROVED

COPYRIGHT CITYZEN LIMITED

CITYZEN
ARCHITECTURE | ENVIRONMENT

MARITIME HOUSE
BARN ROAD NORTH
HGV
EAST SUSSEX
BN41 1WR



CLIENT:
CARGOTEK

DESIGNER:
JOHN SMITH

PROJECT:
CARGOTEK 20FT PRODUCT

TITLE:
SERVICE CUT-OUTS TYPE 1

SCALE: 1:10 @ A1
1:20 @ A3

DATE: 21/02/2017

PURPOSE OF DRAWING:
CONSTRUCTION

DRAWING: PROJECT REF - DRG NO. (REVISION)
1705-301 (G)